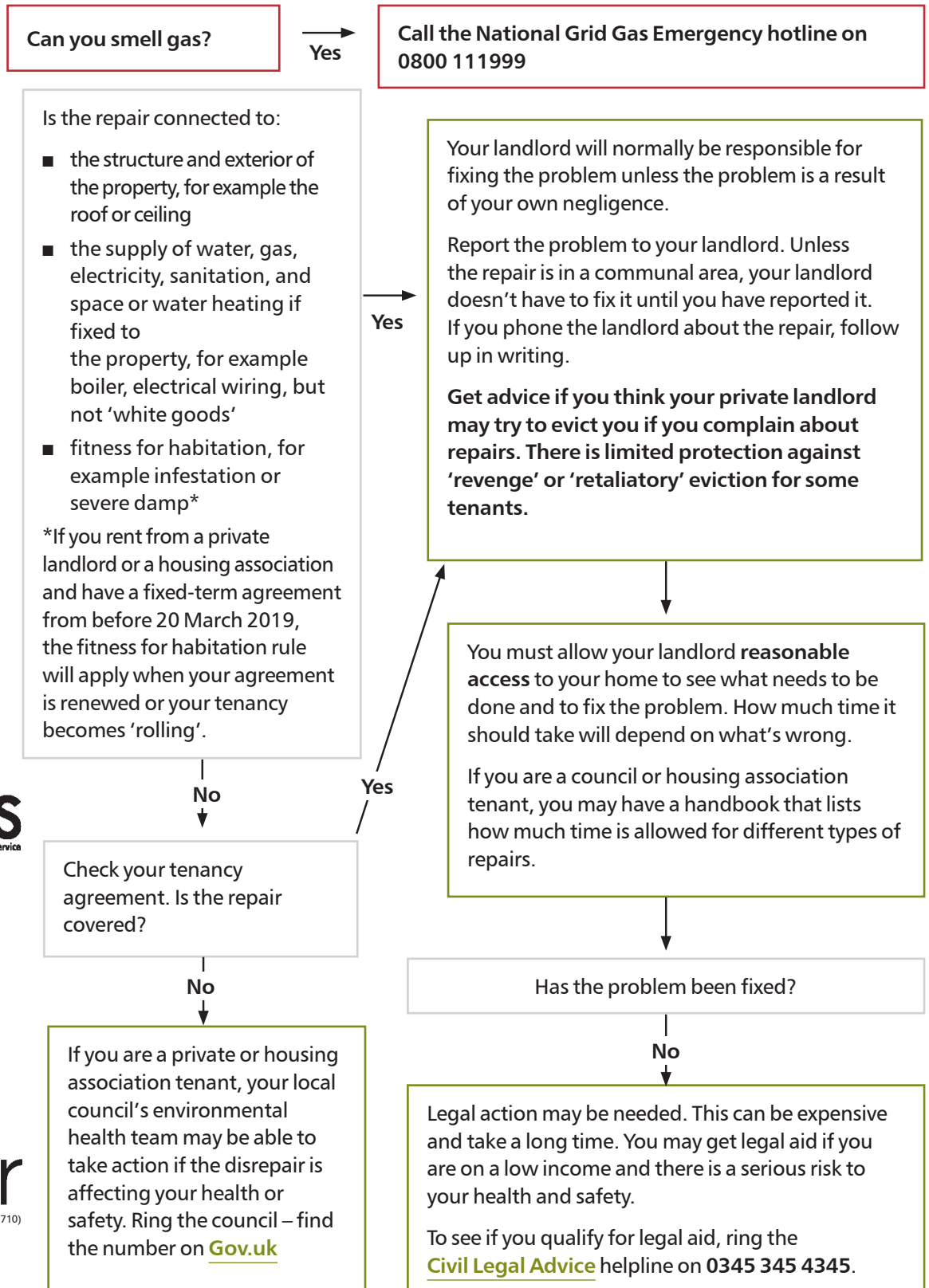


Dealing with disrepair

This flowchart provides an overview of how to deal with disrepair if you are a tenant.



Funded by UK Government



Registered charity in England and Wales (263710) and in Scotland (SC002327).

Further advice

You can get further advice from england.shelter.org.uk/housing_advice, local Shelter advice service or local Citizens Advice. If you have nowhere to sleep tonight, are at risk of harm or losing your home within the next 2 months, call Shelter Helpline on 0808 800 4444 for advice and information on your options.*

*Calls are free from UK landlines and main mobile networks.

Note
Information contained in this factsheet is correct at the time of publication. Please check details before use.